

JVC

SCHEMATIC DIAGRAMS

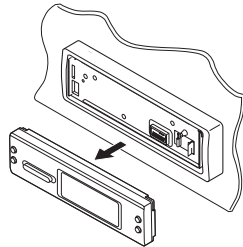
CD RECEIVER

KD-AR5000, KD-LHX500

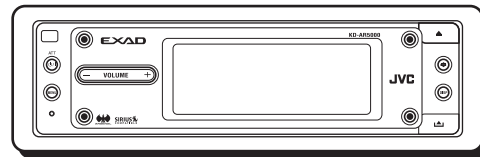
CD-ROM No.SML200403

Area suffix

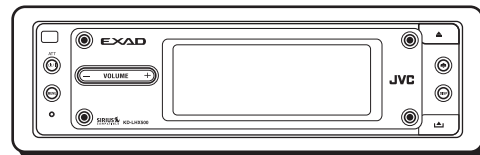
J ----- Northern America



KD-AR5000



KD-LHX500



EXAD

SIRIUS
COMPATIBLE

PICT

COMPACT
disc
DIGITAL AUDIO
TEXT

	KD-AR5000J	LHX500J
ARSENAL rogo	○	×
LINE IN	○	×

Contents

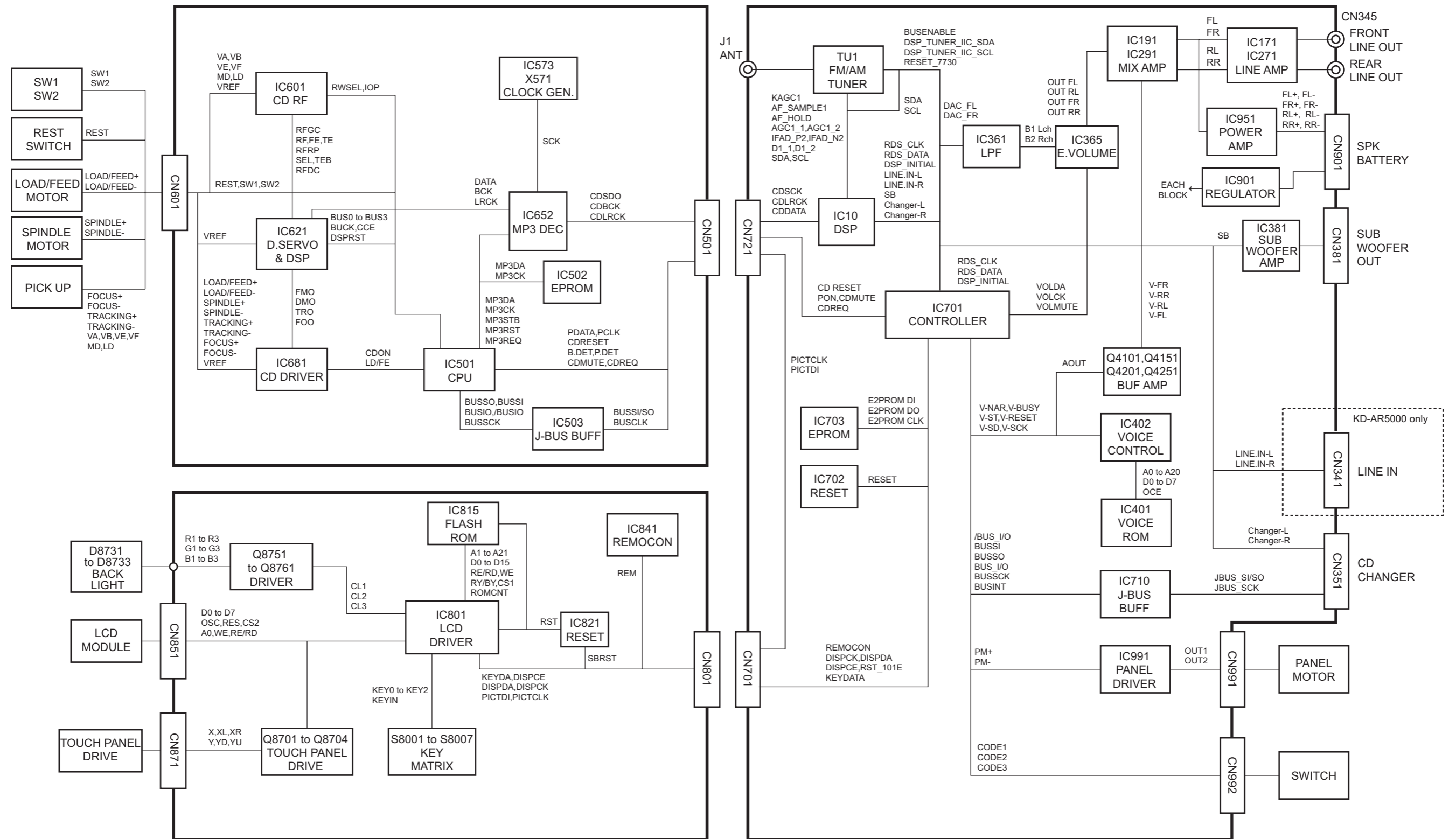
Block diagram	2-1
Standard schematic diagrams	2-2 to 11
Printed circuit boards	2-12 to 14

Safety precaution

 **CAUTION** Burrs formed during molding may be left over on some parts of the chassis. Therefore, pay attention to such burrs in the case of performing repair of this system.

 **CAUTION** Please use enough caution not to see the beam directly or touch it in case of an adjustment or operation check.

Block diagram



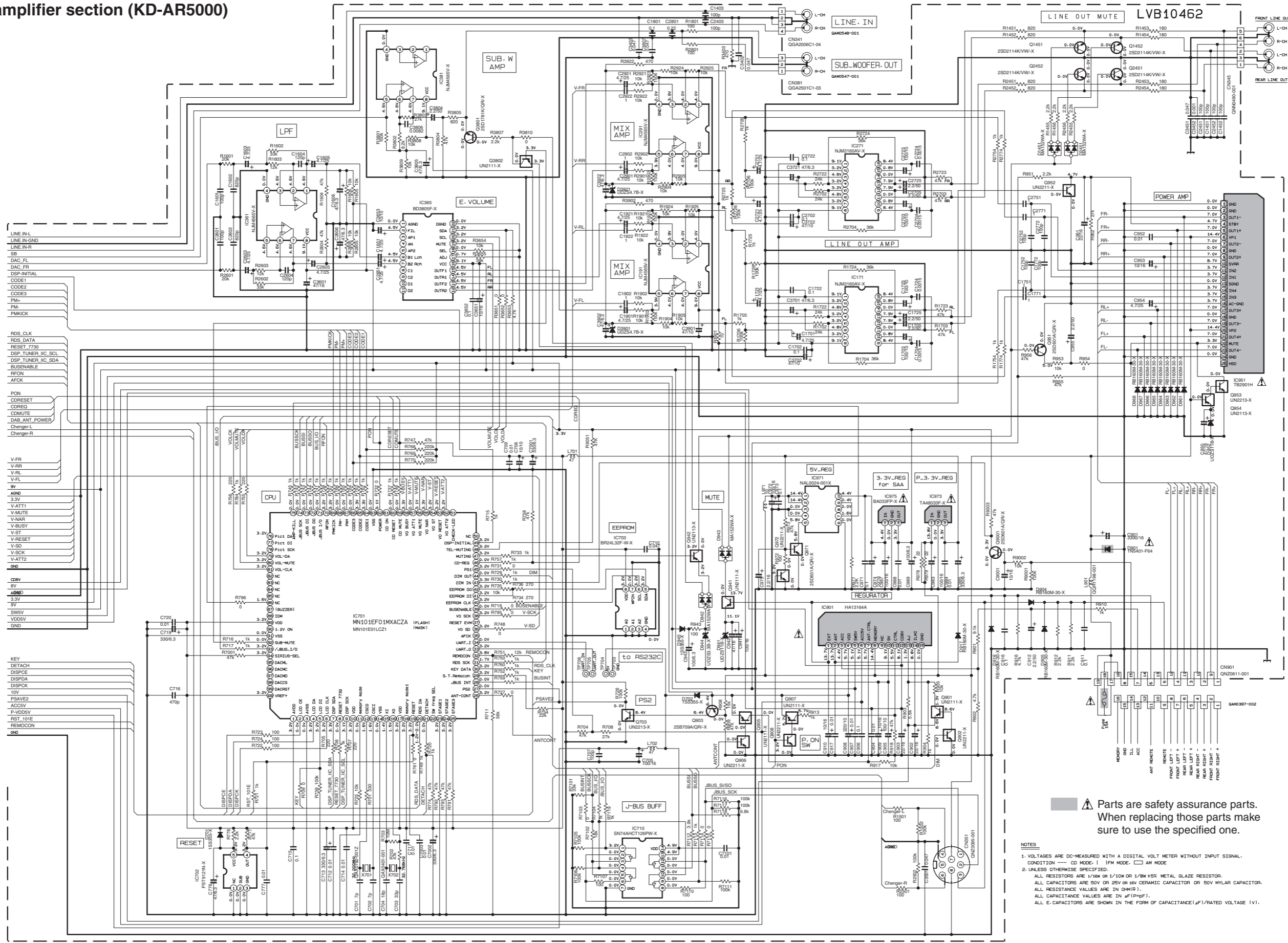
Standard schematic diagrams

■ Main amplifier section (KD-AR5000)

(SHEET 2)

(SHEET 3)

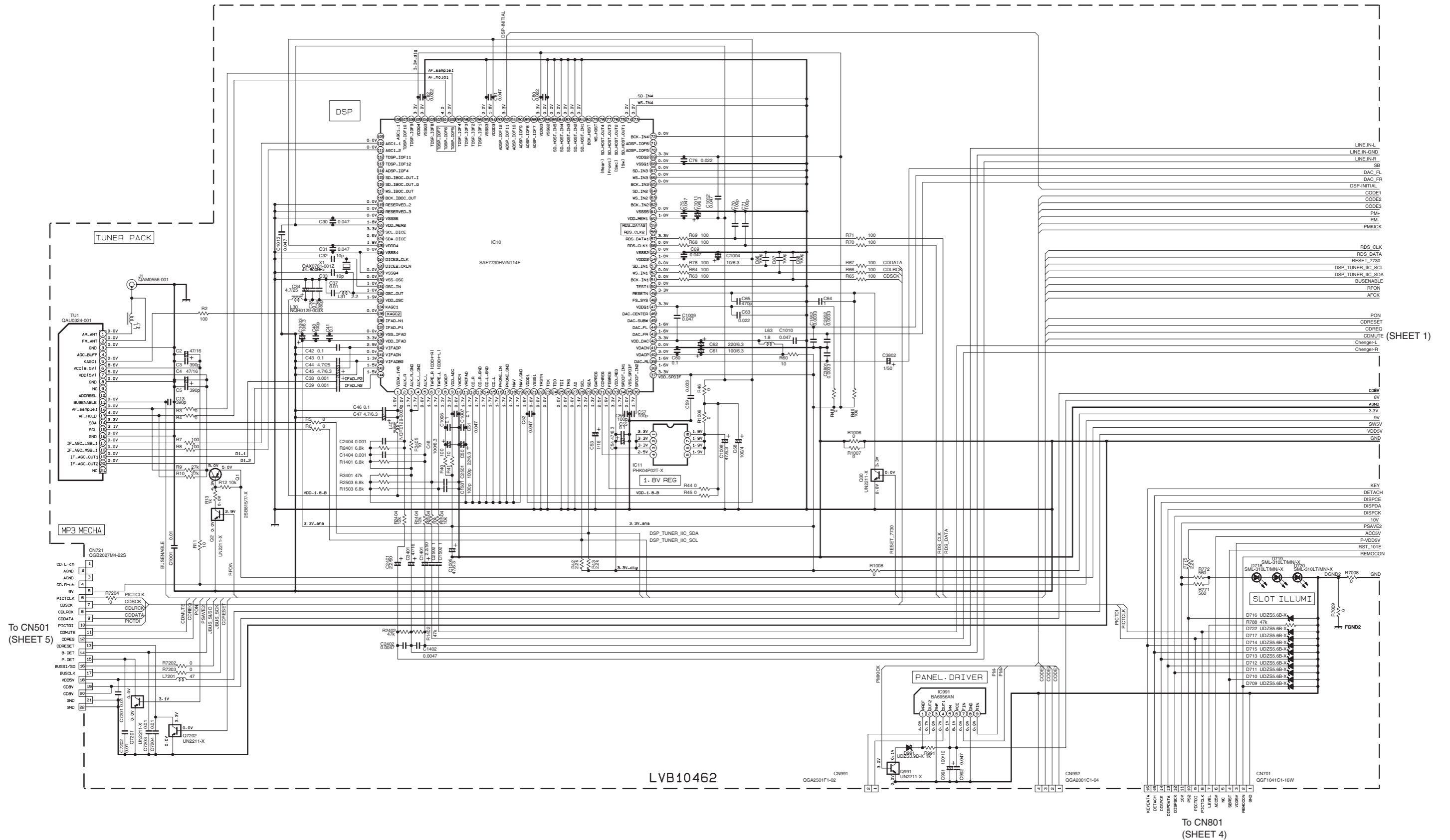
(SHEET 2)



⚠ Parts are safety assurance parts.
When replacing those parts make sure to use the specified one.

- NOTES**
1. VOLTAGES ARE DC-MEASURED WITH A DIGITAL VOLT METER WITHOUT INPUT SIGNAL. CONDITION — CD MODE. I FM MODE. □ AM MODE.
 2. UNLESS OTHERWISE SPECIFIED, ALL RESISTORS ARE 1/8W OR 1/10W OR 1/8W 45% METAL GLAZE RESISTOR. ALL CAPACITORS ARE 50V OR 25V OR 5V CERAMIC CAPACITOR OR 50V WYLAR CAPACITOR. ALL RESISTANCE VALUES ARE IN OHM(Ω). ALL CAPACITANCE VALUES ARE IN pF(pFpF). ALL E. CAPACITORS ARE SHOWN IN THE FORM OF CAPACITANCE (μF)/RATED VOLTAGE (V).

■ DSP section (KD-AR5000)

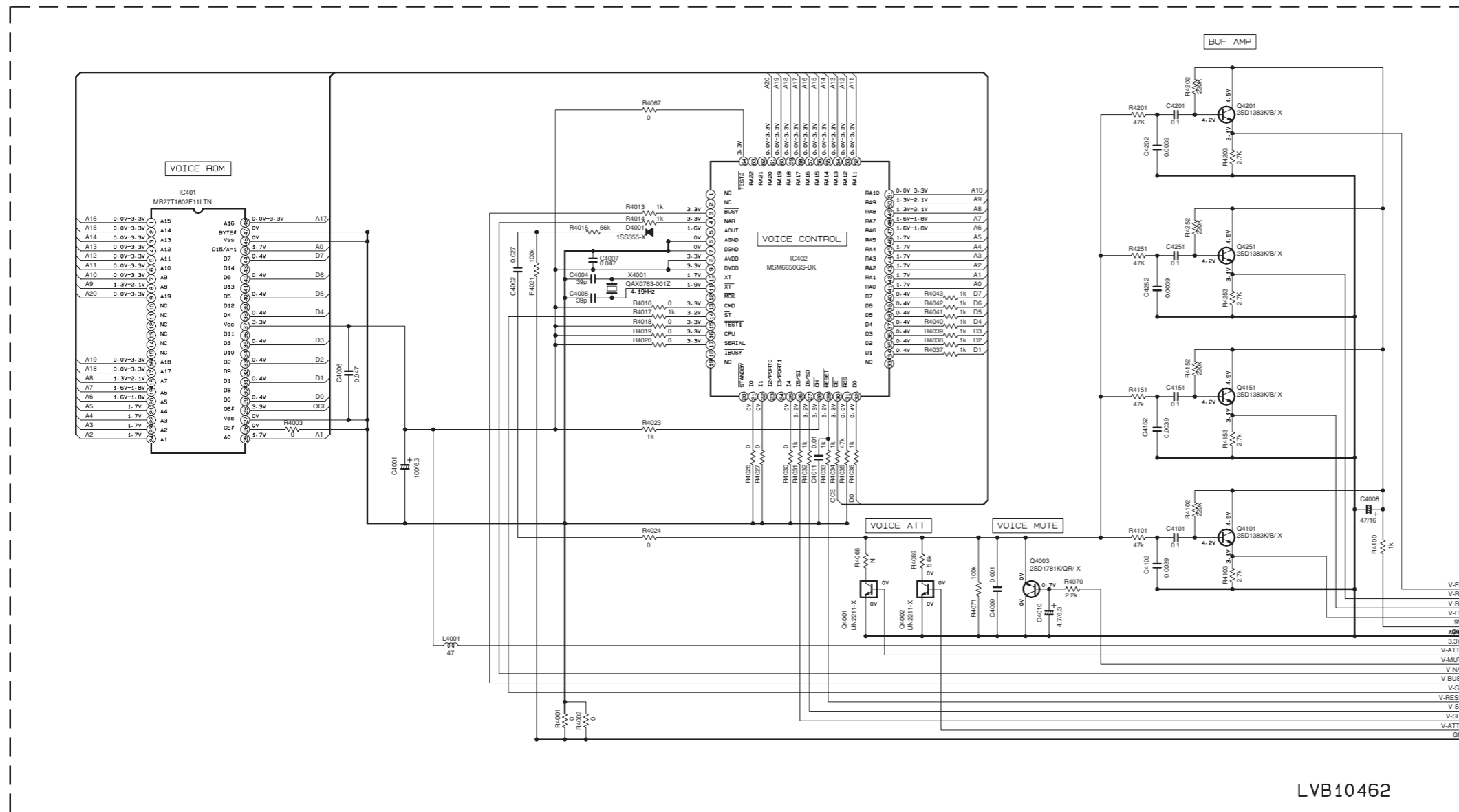


(SHEET 1)

To CN501
(SHEET 5)

To CN801
(SHEET 4)

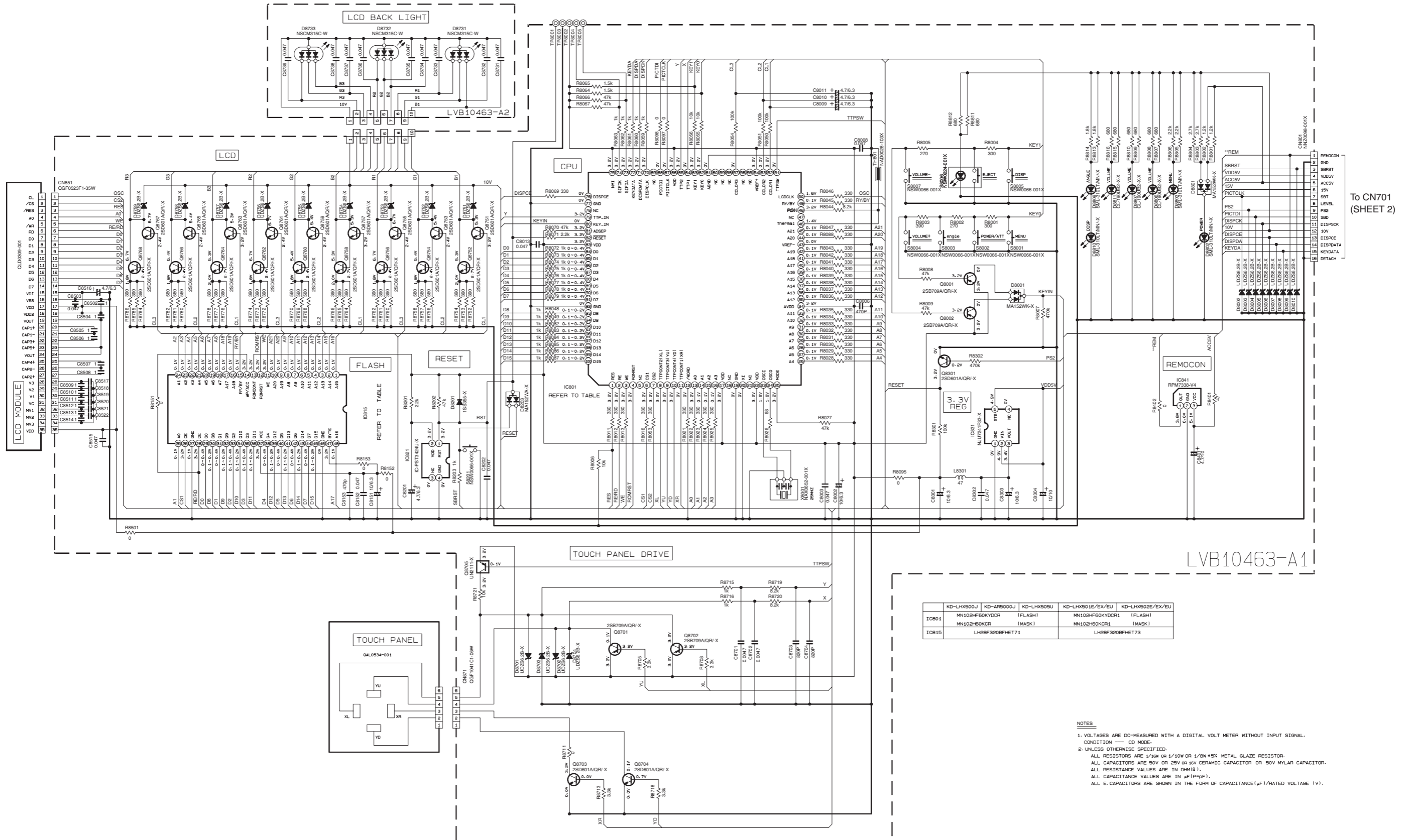
■ Voice section (KD-AR5000)



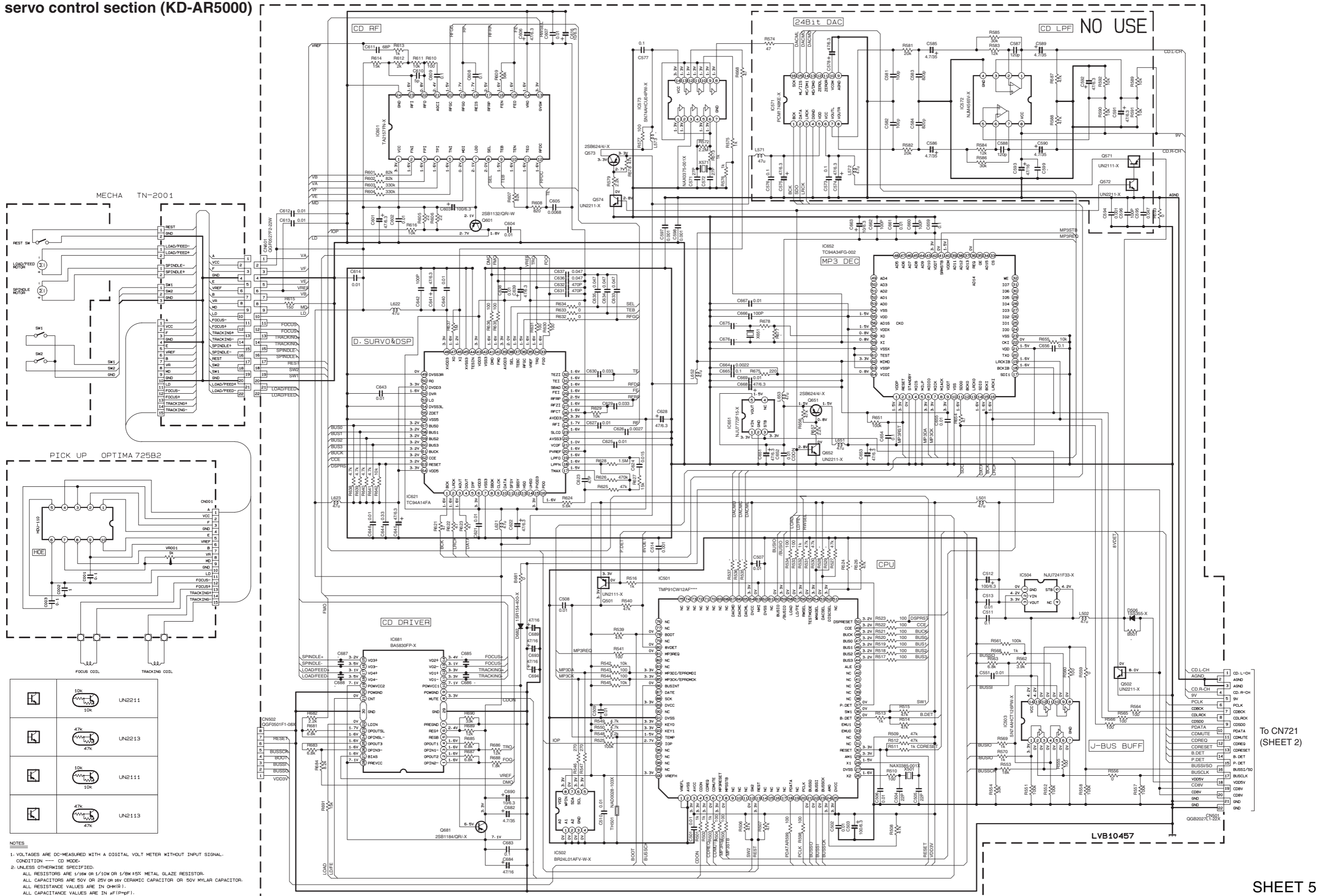
(SHEET 1)

LVB10462

■ LCD & Key control section (KD-AR5000)



CD servo control section (KD-AR5000)

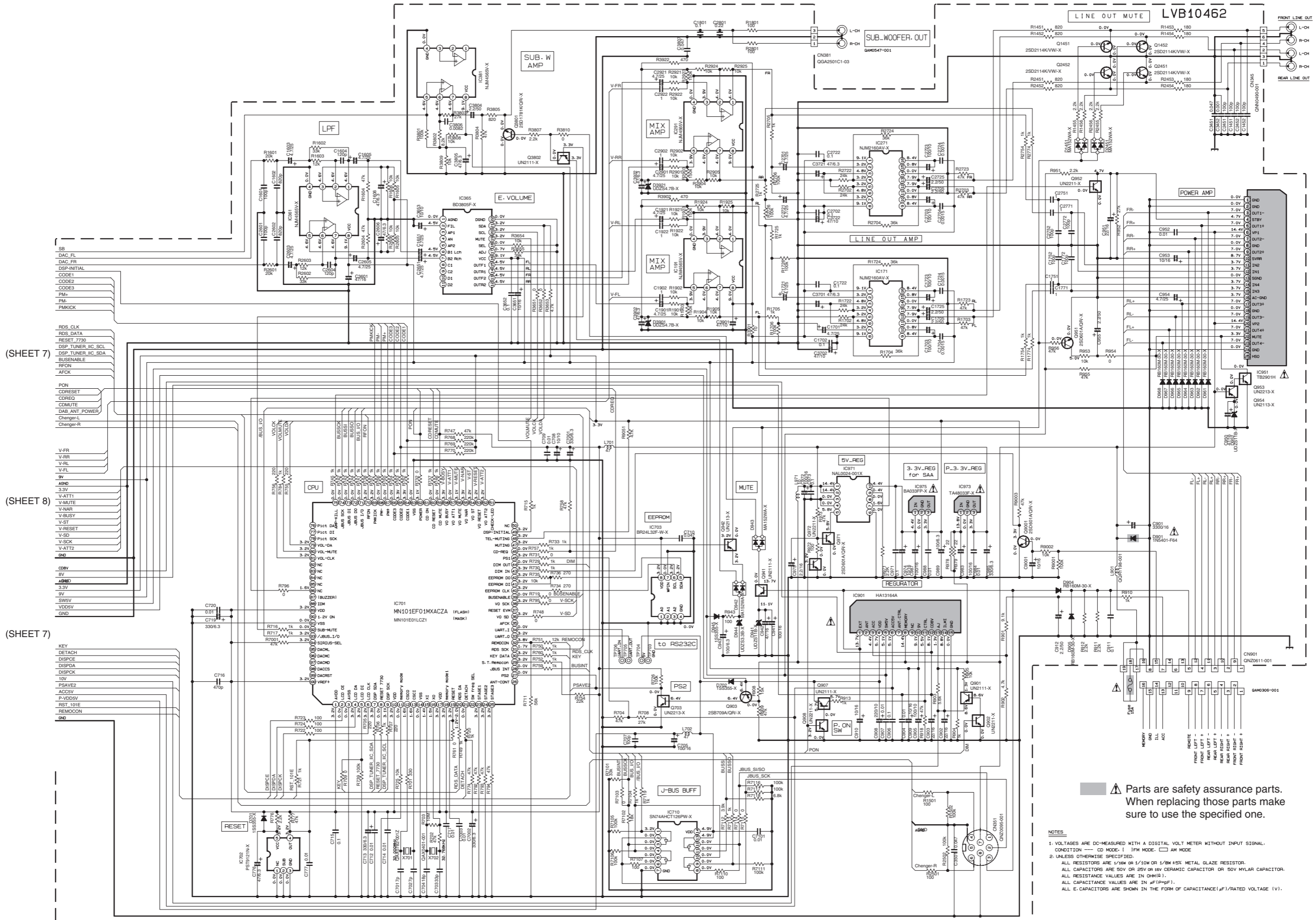


	10k	UN2211
	47k	UN2213
	10k	UN2111
	47k	UN2113

NOTES
 1. VOLTAGES ARE DC-MEASURED WITH A DIGITAL VOLT METER WITHOUT INPUT SIGNAL. CONDITION --- CD MODE.
 2. UNLESS OTHERWISE SPECIFIED.
 ALL RESISTORS ARE 1/16W OR 1/10W OR 1/8W ±5% METAL GLAZE RESISTOR.
 ALL CAPACITORS ARE 50V OR 25V OR 16V CERAMIC CAPACITOR OR 50V MYLAR CAPACITOR.
 ALL RESISTANCE VALUES ARE IN Ω(M) (I).
 ALL CAPACITANCE VALUES ARE IN pF(p) (F).
 ALL E-CAPACITORS ARE SHOWN IN THE FORM OF CAPACITANCE/μF/RATED VOLTAGE (V).

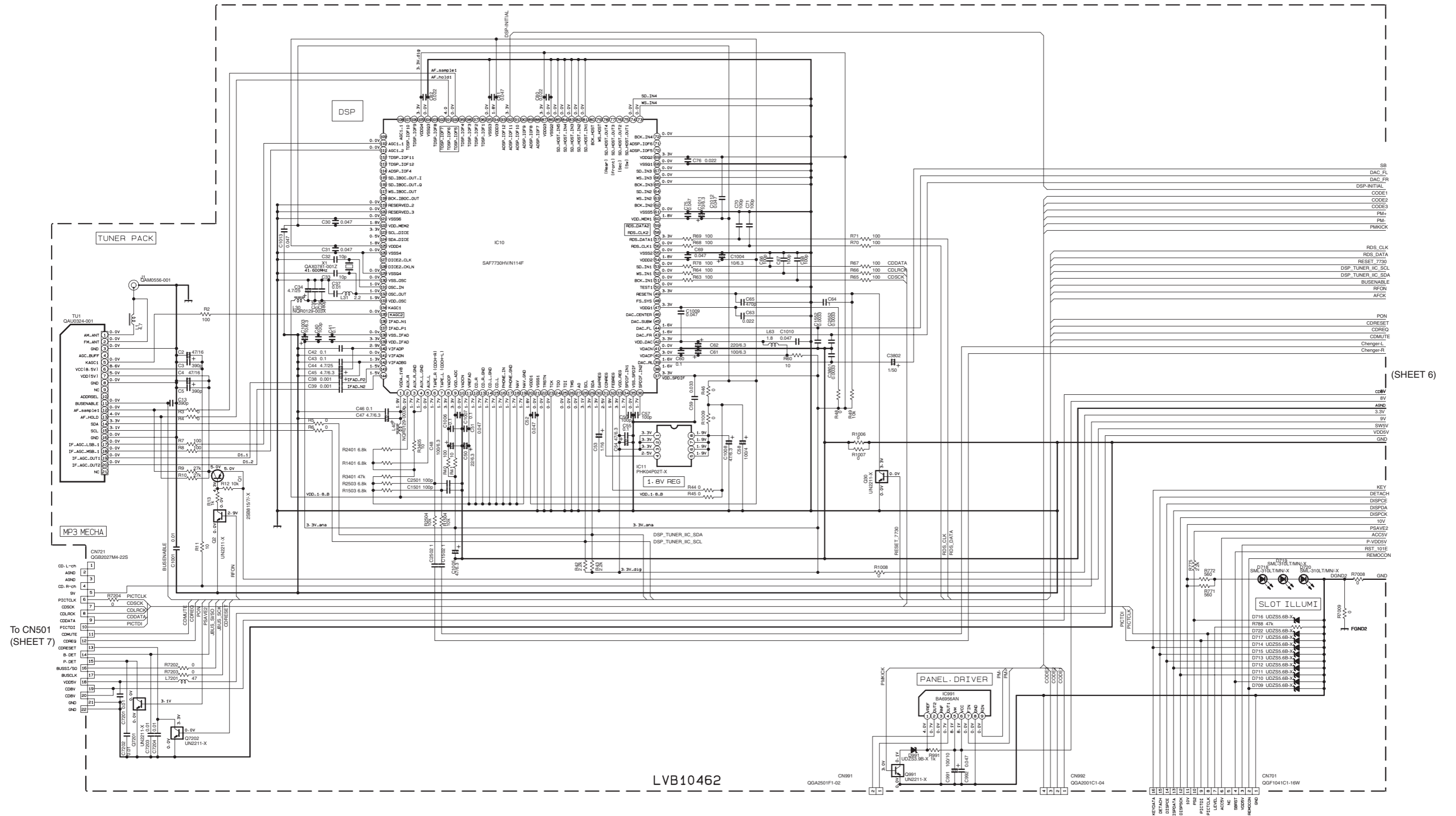
To CN721 (SHEET 2)

■ Main amplifier section (KD-LHX500)



▲ Parts are safety assurance parts. When replacing those parts make sure to use the specified one.

- NOTES
1. VOLTAGES ARE DC-MEASURED WITH A DIGITAL VOLT METER WITHOUT INPUT SIGNAL. CONDITION: □ CD MODE, I 1FM MODE, □ AM MODE.
 2. UNLESS OTHERWISE SPECIFIED: ALL RESISTORS ARE 1/8W OR 1/10W OR 1/8W 45°C METAL GLAZE RESISTOR. ALL CAPACITORS ARE 50V OR 25V OR 16V CERAMIC CAPACITOR OR 50V MYLAR CAPACITOR. ALL CAPACITANCE VALUES ARE IN μF (PpfF). ALL E-CAPACITORS ARE SHOWN IN THE FORM OF CAPACITANCE (μF)/RATED VOLTAGE (V).



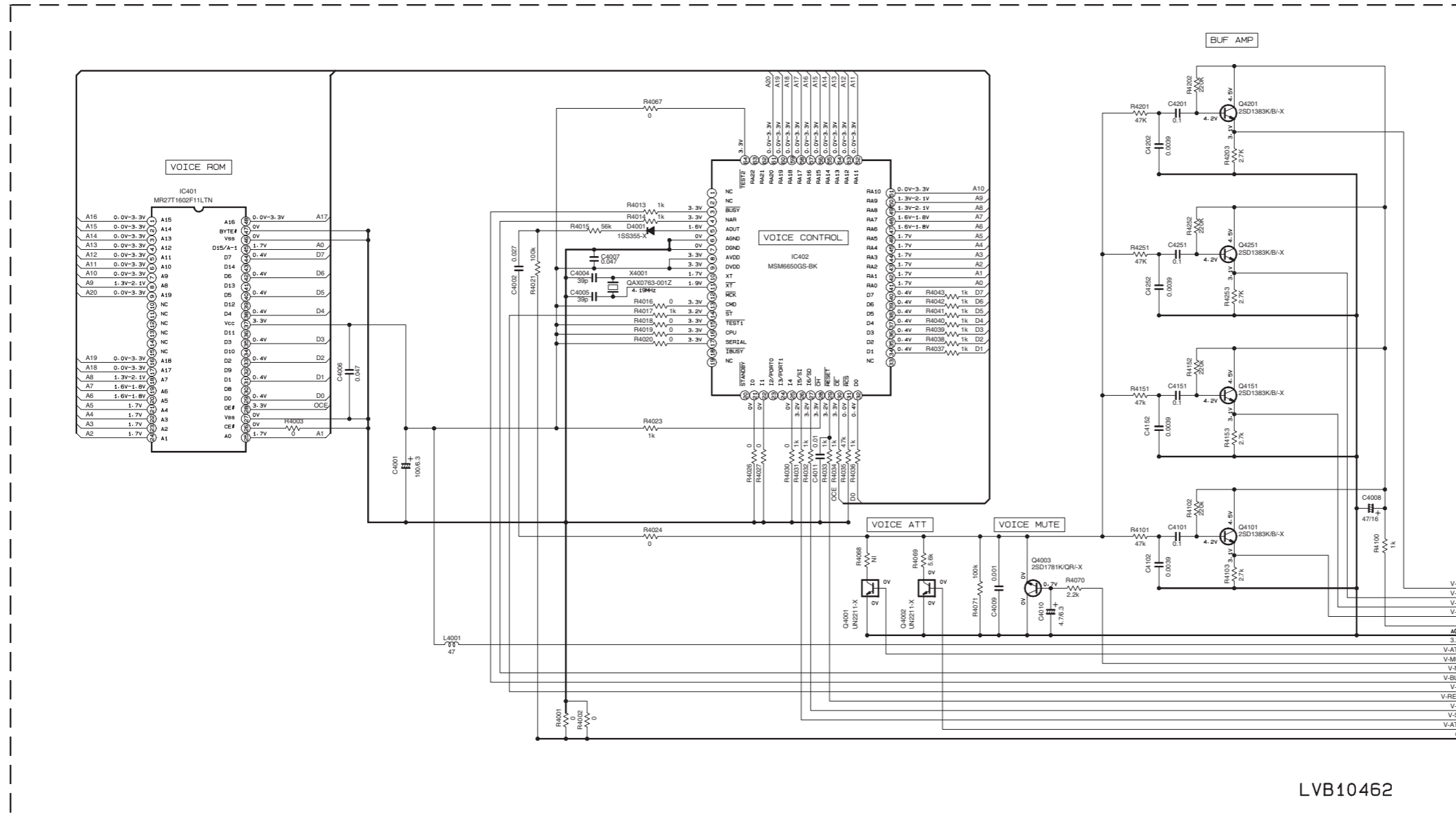
(SHEET 6)

To CN501
(SHEET 7)

To CN801
(SHEET 9)

LVB10462

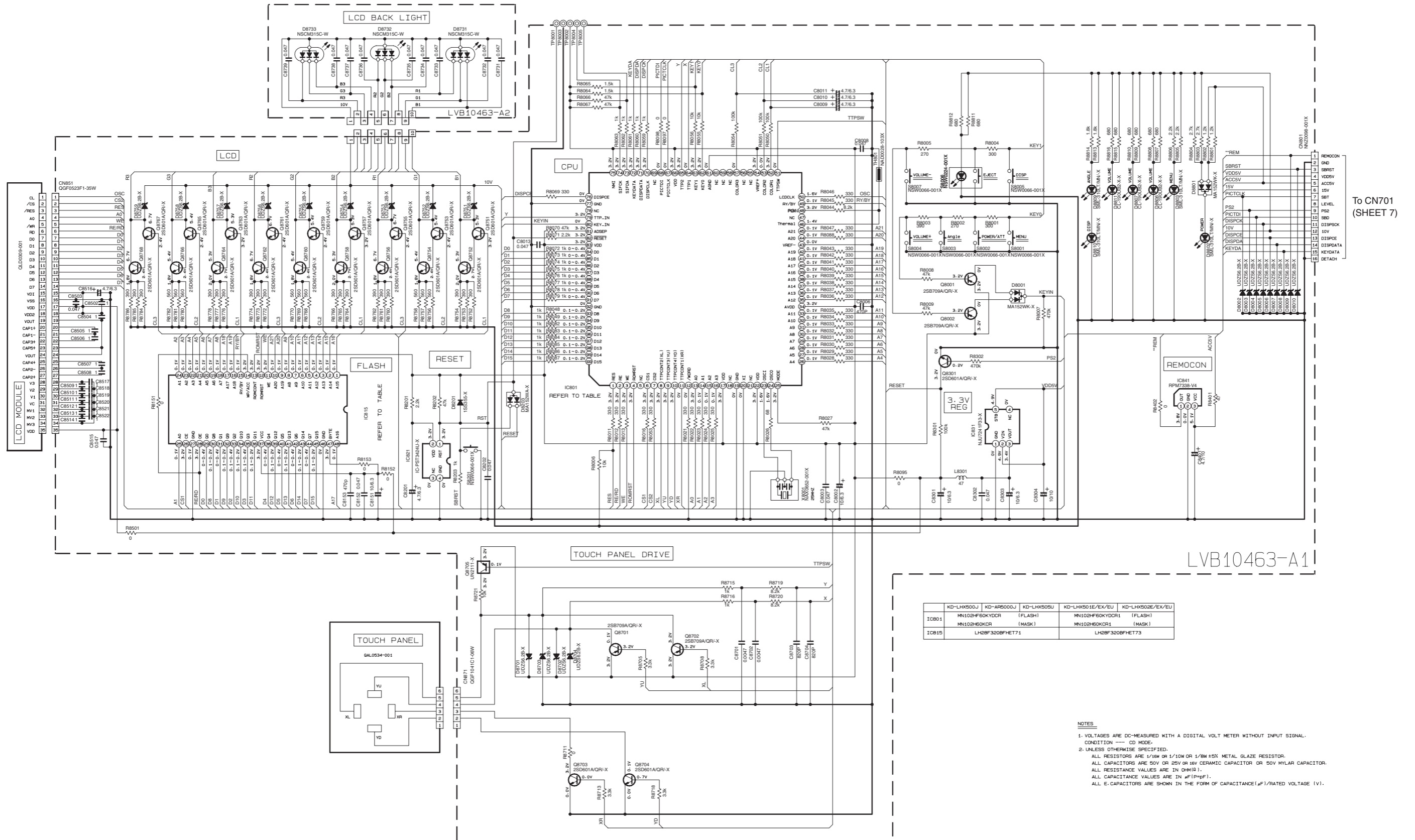
■ Voice section (KD-LHX500)



(SHEET 6)

LVB10462

■ LCD & Key control section (KD-LHX500)

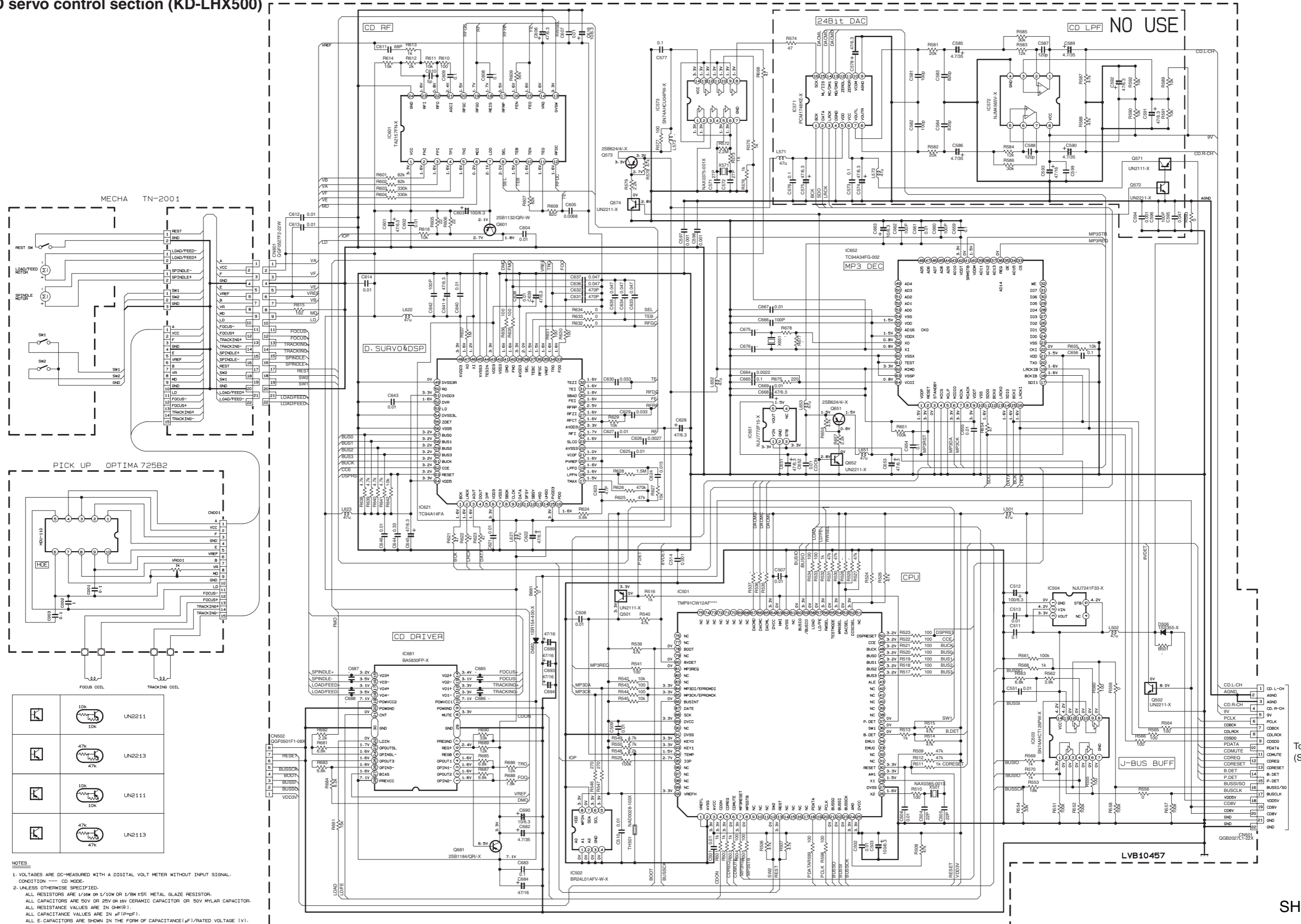


	KD-LHX500J	KD-AP6000J	KD-LHX505U	KD-LHX501E/EX/EU	KD-LHX502E/EX/EU
IC801	MN102HF60KYDCR	[FLASH]	MN102HF60KYDCR1	[FLASH]	[FLASH]
IC815	LH2BF320PHET71	[MASK]	MN102HE0KCR1	[MASK]	[MASK]

- NOTES**
1. VOLTAGES ARE DC-MEASURED WITH A DIGITAL VOLT METER WITHOUT INPUT SIGNAL. CONDITION --- CD MODE.
 2. UNLESS OTHERWISE SPECIFIED, ALL RESISTORS ARE 1/16W OR 1/10W OR 1/8W ±5% METAL GLAZE RESISTOR. ALL CAPACITORS ARE 50V OR 10V OR 16V CERAMIC CAPACITOR OR 50V MYLAR CAPACITOR. ALL RESISTANCE VALUES ARE IN Ω(M). ALL CAPACITANCE VALUES ARE IN μF(PpF). ALL E. CAPACITORS ARE SHOWN IN THE FORM OF CAPACITANCE(μF)/RATED VOLTAGE (V).

To CN701 (SHEET 7)

■ CD servo control section (KD-LHX500)



	10k	UN2211
	47k	UN2213
	10k	UN2111
	47k	UN2113

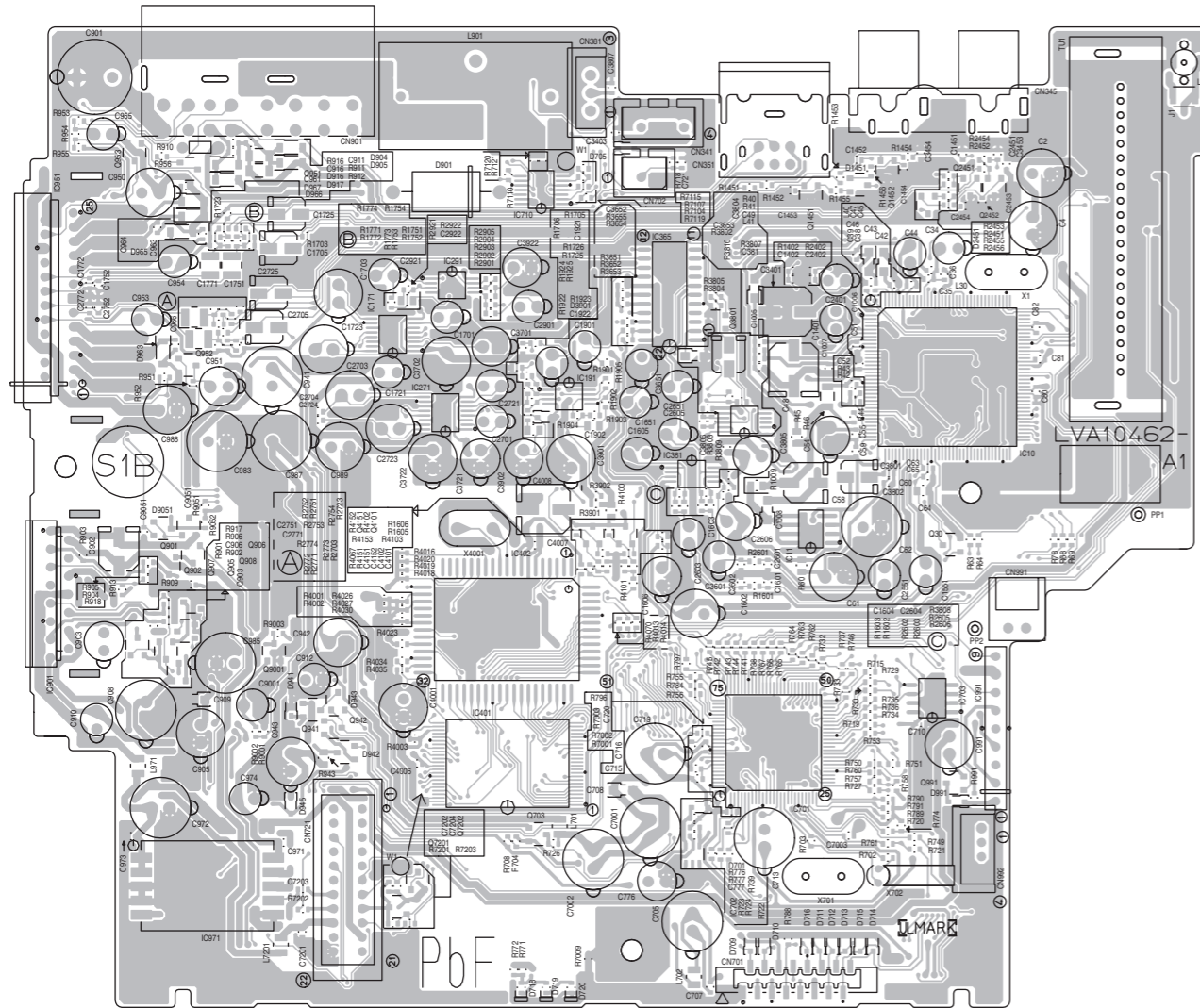
- NOTES
- VOLTAGES ARE DC-MEASURED WITH A DIGITAL VOLT METER WITHOUT INPUT SIGNAL.
CONDITION — CD HOME.
 - UNLESS OTHERWISE SPECIFIED:
ALL RESISTORS ARE 1/16W OR 1/10W OR 1/8W 5% METAL GLAZE RESISTOR.
ALL CAPACITORS ARE 50V OR 25V OR 16V CERAMIC CAPACITOR OR 50V MYLAR CAPACITOR.
ALL RESISTANCE VALUES ARE IN OHM(Ω).
ALL CAPACITANCE VALUES ARE IN pF(pF).
ALL E-CAPACITORS ARE SHOWN IN THE FORM OF CAPACITANCE(μF)/RATED VOLTAGE (V).

To CN721 (SHEET 7)

Printed circuit boards

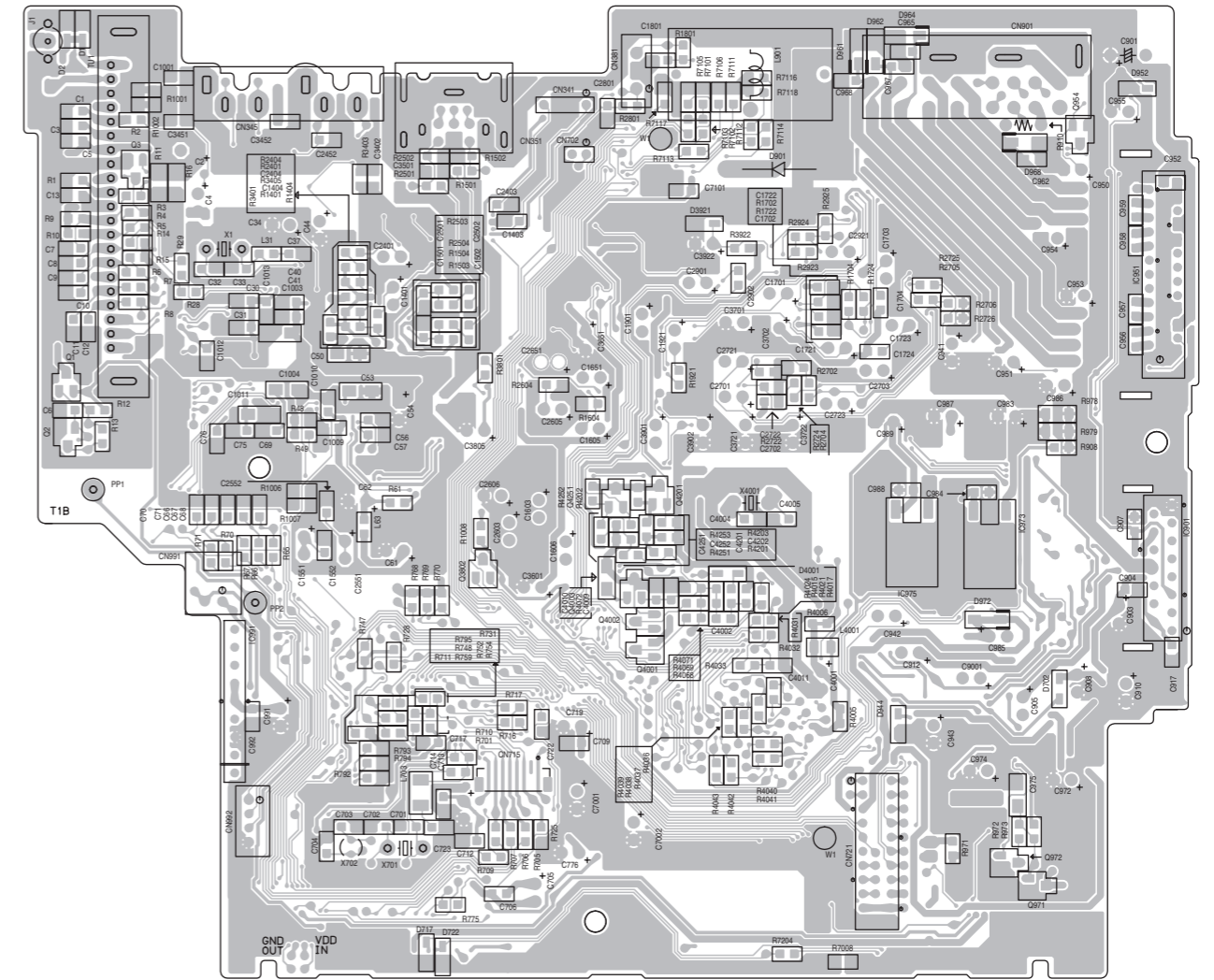
■ Main board

Forward side



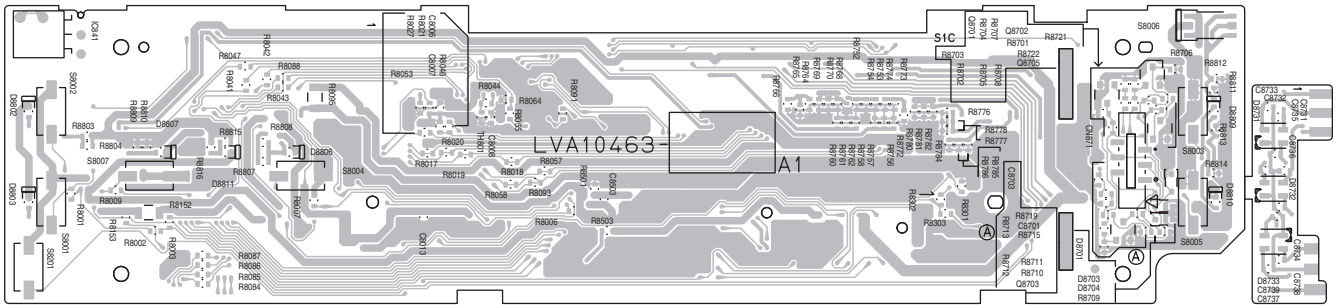
■ Main board

Reverse side



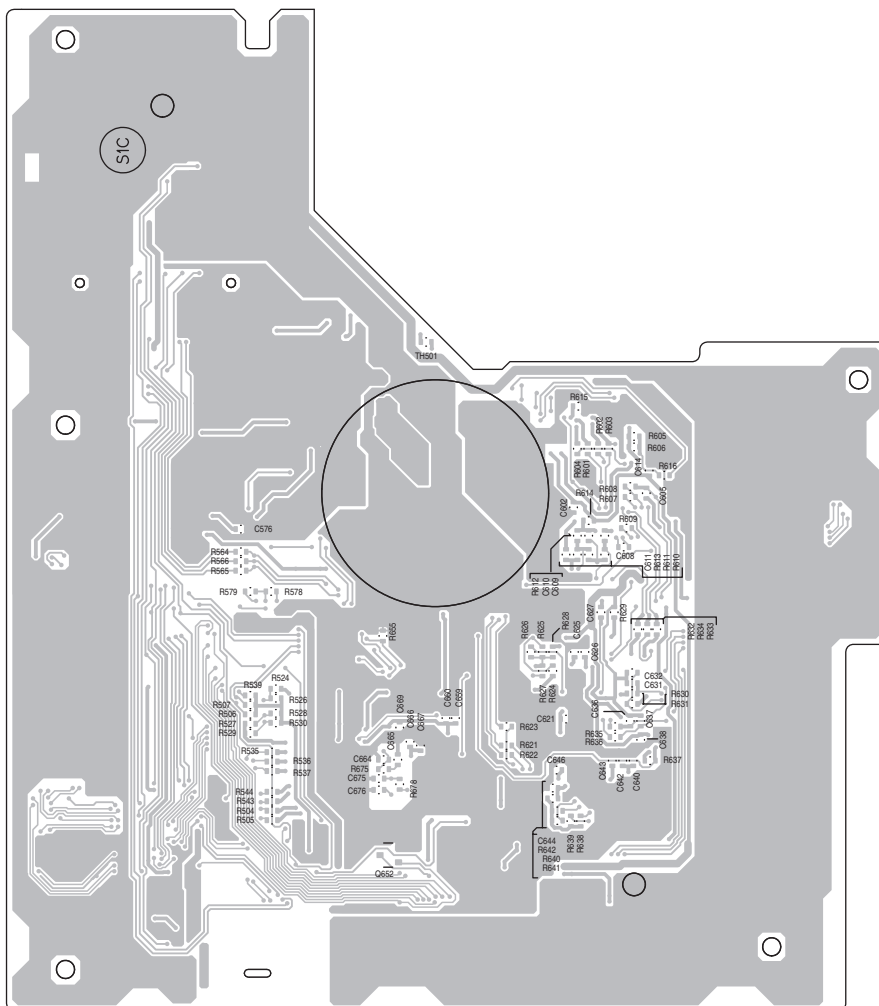
■ Front board

Forward side



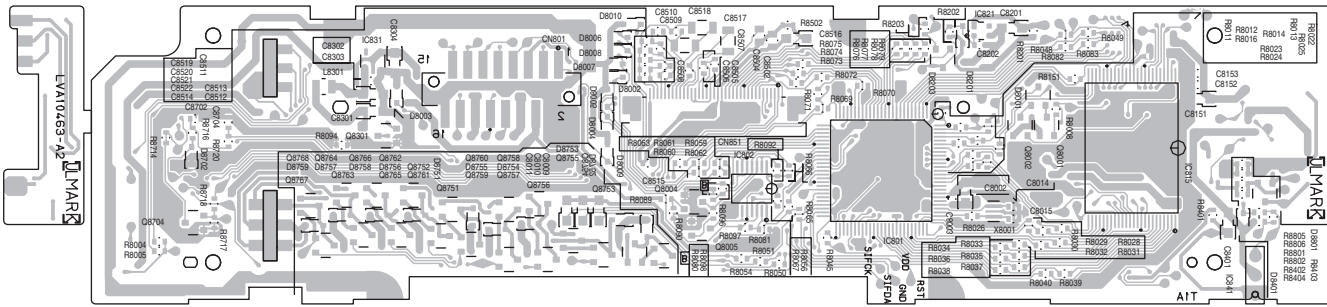
■ Mecha control board

Forward side



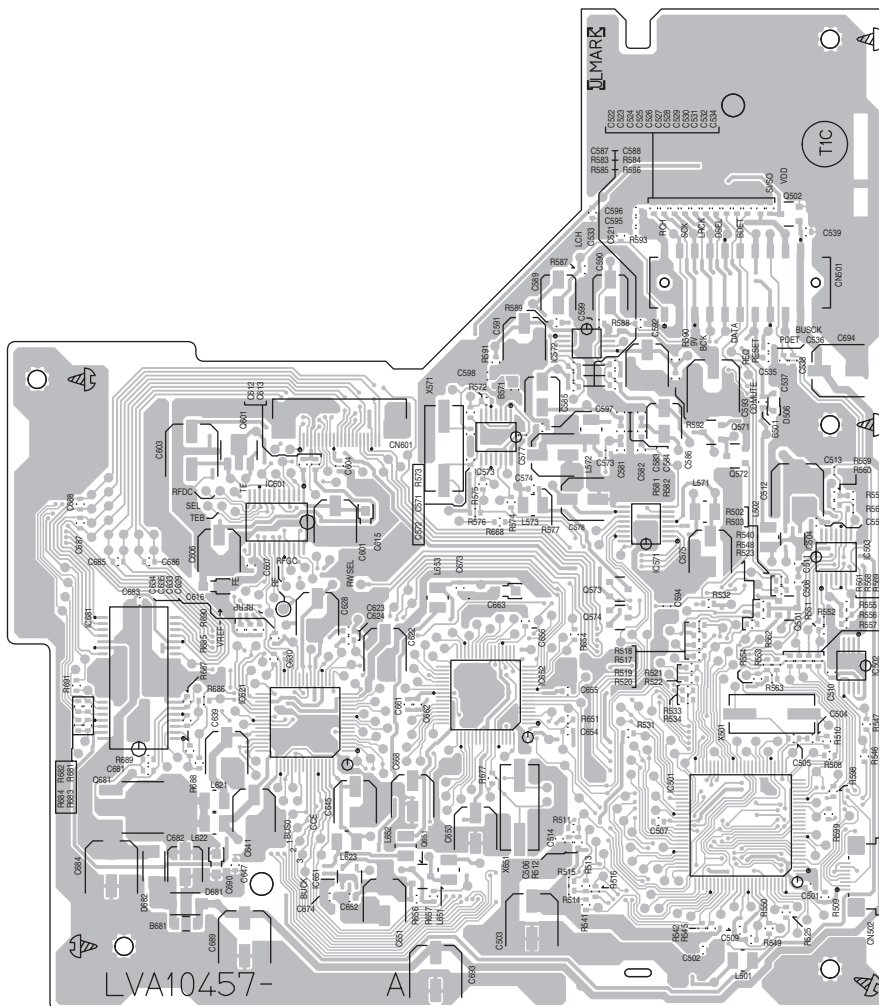
■ Front board

Reverse side



■ Mecha control board

Reverse side



< MEMO >

JVC

VICTOR COMPANY OF JAPAN, LIMITED

AV & MULTIMEDIA COMPANY CAR ELECTRONICS CATEGORY 10-1, 1chome, Ohwatari-machi, Maebashi-city, 371-8543, Japan

(No.MA043SCH)



Printed in Japan
WPC